



STUDIO

Model Gallery

Table of Contents

[How to Read Model Entries](#)

[Anatomy](#)

[Zygote Human Anatomy](#)

[Medical Bone Scans](#)

[Misc Anatomy](#)

[Archaeology](#)

[Astronomy](#)

[Celestial Bodies - Planets, Moons, Stars](#)

[Comets and Asteroids](#)

[Solar System and Other](#)

[NASA Models](#)

[Biology](#)

[Proteins, Viruses, Macromolecules](#)

[Chemistry](#)

[Furniture and Household Items](#)

[Historical Artifacts](#)

[Just For Fun](#)

[Landmarks](#)

[Mechanical](#)

[Plants and Trees](#)

[Statuary and Sculpture](#)

[Vehicles](#)

[Helicopters](#)

[Planes & Jets](#)

[Cars](#)

[Motorcycles](#)

[Nautical Vehicles](#)

[Zoology](#)

[Animals](#)

[Bugs and Insects](#)

[Appendix](#)

About this set of models:

Total Models Included: 511

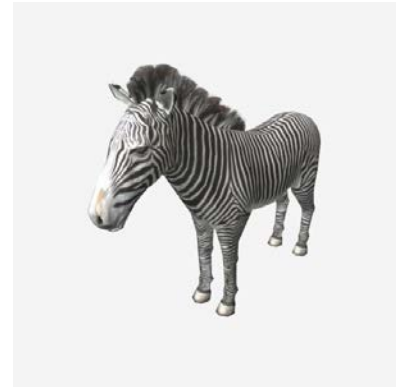
How to Read Model Entries



Crab
Dissectible (Exterior) : 11
3D-Scan



Elephant w/ Skeleton
Dissectible (Interior) : 50
Modeled



Zebra
Solid: 1
Modeled

Solid: The model is one piece. It cannot be taken apart with the dissect tool.

Dissectible: The model is made up of multiple pieces. The model can be taken apart with the dissect tool.

Exterior: The model's dissectible pieces reflect exterior geometry.

Interior: The model's dissectible pieces reflect interior and exterior geometry.

3D-Scan: The model was created from a 3D-scan of an object.

Modeled: The model was created with modeling software.

Number: The number at the end of the "Solid" or "Dissectible" line is the number of pieces associated with the model.

Anatomy

4 models

Zygote Human Anatomy



Female Arm
Dissectible (Interior) : 90
Modeled



Female Head
Dissectible (Interior) : 42
Modeled



Female Leg
Dissectible (Interior) : 31
Modeled



Female Torso
Dissectible (Interior) : 57
Modeled

Medical Bone Scans

16 models



Cervical Spine
Dissectible (Exterior) : 2
3D-Scan



Clavicle
Dissectible (Exterior) : 3
3D-Scan



Foot Fracture
Dissectible (Exterior) : 14
3D-Scan



Femur
Solid : 1
3D-Scan



Lumbar Spine
Solid : 1
3D-Scan



Lumbar Spine Fracture
Solid : 1
3D-Scan



Knee
Dissectible (Exterior) : 4
3D-Scan



(Knee) Patella Fracture
Dissectible (Exterior) : 4
3D-Scan



(Knee) Tibia Fracture
Dissectible (Exterior) : 4
3D-Scan



Shoulder
Dissectible (Exterior) : 3
3D-Scan



Shoulder Fracture
Dissectible (Exterior) : 3
3D-Scan



Pelvis
Solid : 1
3D-Scan



Thoracic Spine
Solid : 1
3D-Scan



Thoracic Spine Fracture
Solid : 1
3D-Scan



Tibia and Fibula
Dissectible (Exterior) : 2
3D-Scan



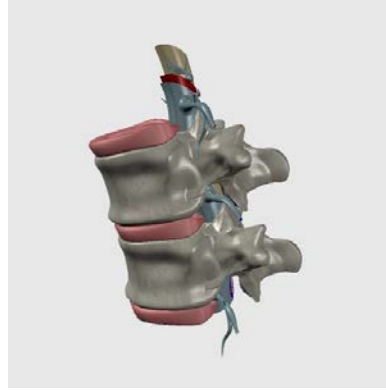
Rat Skeleton
Solid : 1
3D-Scan

Misc Anatomy

2 models



Brain
Dissectible : 5
Modeled



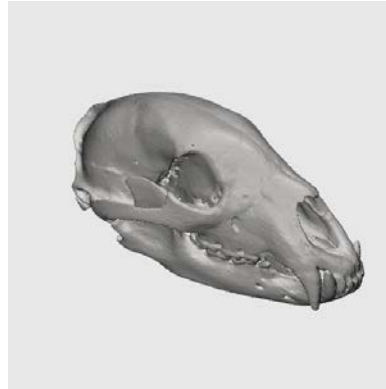
Vertebrae
Dissectible : 9
Modeled

Archaeology

37 models



Ammonite
Solid: 1
3D-Scan



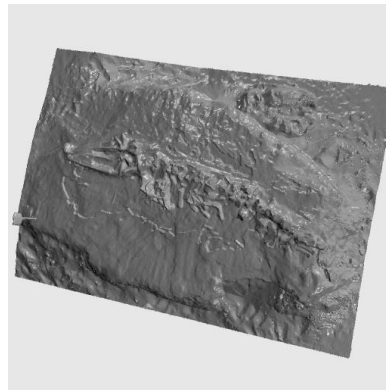
Black Bear Skull
Solid: 1
3D-Scan



Cow Skull
Solid: 1
3D-Scan



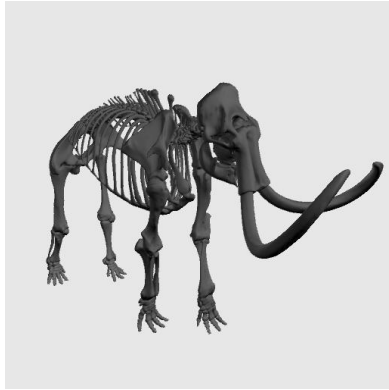
Dolphin Skull
Solid: 1
3D-Scan



Fossil Whale 675
Solid: 1
3D-Scan



Human Skeleton Excavation
Solid: 1
3D-Scan



Mammoth Skeleton

Solid: 1
3D-Scan



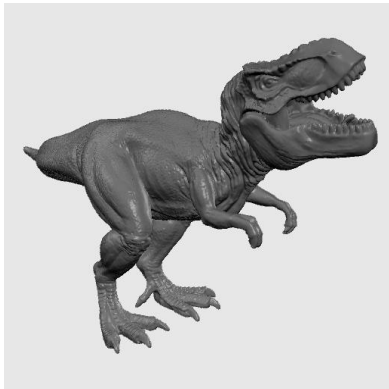
Tarbosaurus Skull

Solid: 1
3D-Scan



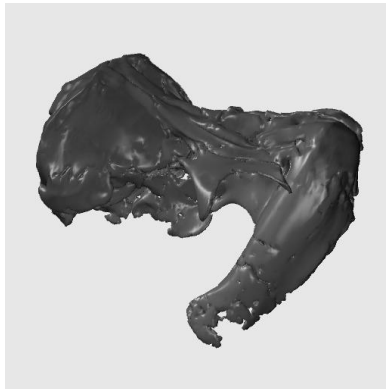
Trilobite

Solid: 1
3D-Scan



Tyrannosaurus

Solid: 1
3D-Scan



Walrus Skull

Solid: 1
3D-Scan



Fossil 1*
[Platycrinites laevis]

Solid: 1
3D-Scan



Fossil 2*
[Palaeastacus dixoni]

Solid: 1
3D-Scan



Fossil 3*
[Cidaris dixoni]

Solid: 1
3D-Scan



Fossil 4*
[Cidaris serrifera]

Solid: 1
3D-Scan



Fossil 5*
Clam Shell
Solid: 1
3D-Scan



Fossil 6*
[*Beryx superbus*]
Solid: 1
3D-Scan



Fossil 7*
[*Fodonyx spenceri*]
Solid: 1
3D-Scan



Fossil 8*
[*Sphenopteris coriacea*]
Solid: 1
3D-Scan



Fossil 9*
[*Urenchelys anglicus*]
Solid: 1
3D-Scan



Fossil 10*
[*Severnichthyes acuminata*]
Solid: 1
3D-Scan



Fossil 11*
[*Solaster reedi*]
Solid: 1
3D-Scan



Fossil 12*
[*Globularia adurni*]
Solid: 1
3D-Scan



Fossil 13*
[*Nephrops reedii*]
Solid: 1
3D-Scan



Fossil 14*
[*Macronis tanaupus*]
Solid: 1
3D-Scan



Fossil 15*
[*Mastodon angustidens*]
Solid: 1
3D-Scan



Fossil 16*
[*Trigonia costata* var *lata*]
Solid: 1
3D-Scan



Fossil 17*
[*Ogyginus condensis septenarius*]
Solid: 1
3D-Scan



Fossil 18*
[*Baphetes kirkbyi*]
Solid: 1
3D-Scan



Fossil 19*
[*Palaeomolgophis scoticus*]
Solid: 1
3D-Scan



Fossil 20*
[*Pteroplax cornutus*]
Solid: 1
3D-Scan



Fossil 21*
[*Neovenator salerii*]
Solid: 1
3D-Scan



Fossil 22*
[*Scelidosaurus harrisonii*]
Solid: 1
3D-Scan



Fossil 23*
[*Rhynchosaur spenceri*]
Solid: 1
3D-Scan



Fossil 24*
[*Dorsetochelys delairi*]
Solid: 1
3D-Scan



Fossil 25*
[*Brightonella sandlingensis*]
Solid: 1
3D-Scan



Fossil 26*
[*Rhachiosoma bispinosa*]
Solid: 1
3D-Scan

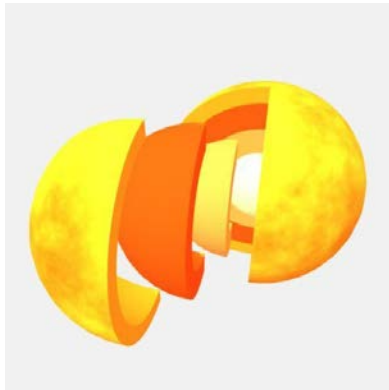
*Please refer to [the fossil scan sources appendix](#) for more information on individual specimens.

Astronomy

62 models

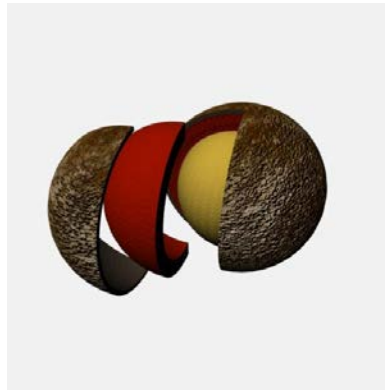
Celestial Bodies - Planets, Moons, Stars

35 models



Sun

Dissectible (Interior) : 10
Modeled



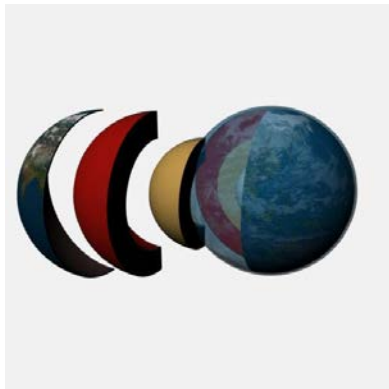
Mercury

Dissectible (Interior) : 7
Modeled



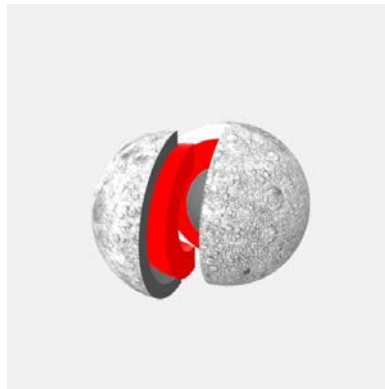
Venus

Dissectible (Interior) : 8
Modeled



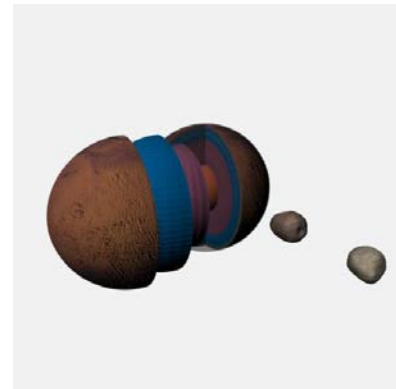
Earth

Dissectible (Interior) : 12
Modeled



Moon

Dissectible (Interior) : 7
Modeled



Mars

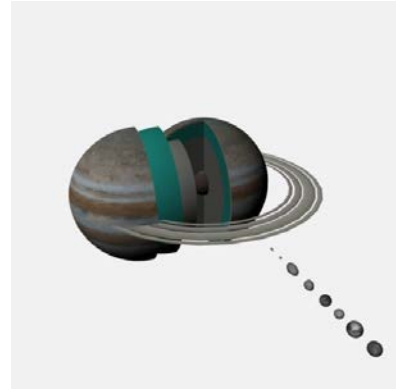
Dissectible (Interior) : 13
Modeled



Phobos
Solid: 1
Modeled



Deimos
Solid: 1
Modeled



Jupiter
Dissectible (Interior) : 22
Modeled



Metis
Solid: 1
Modeled



Adrastea
Solid: 1
Modeled



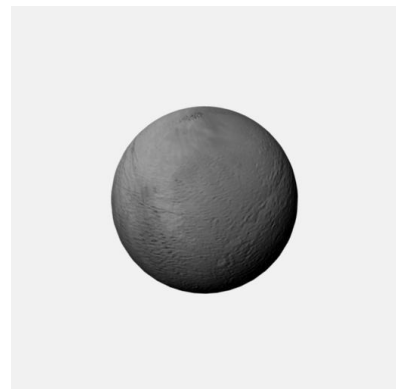
Amalthea
Solid: 1
Modeled



Thebe
Solid: 1
Modeled



Io
Solid: 1
Modeled



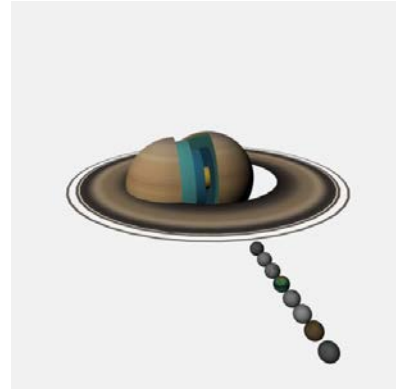
Europa
Solid: 1
Modeled



Ganimede
Solid: 1
Modeled



Callisto
Solid: 1
Modeled



Saturn
Dissectible (Interior) : 24
Modeled



Mimas
Solid: 1
Modeled



Enceladus
Solid: 1
Modeled



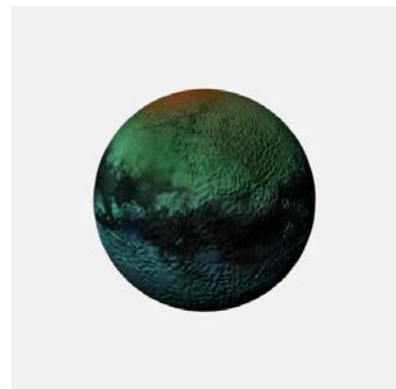
Tethys
Solid: 1
Modeled



Dione
Solid: 1
Modeled



Rhea
Solid: 1
Modeled



Titan
Solid: 1
Modeled



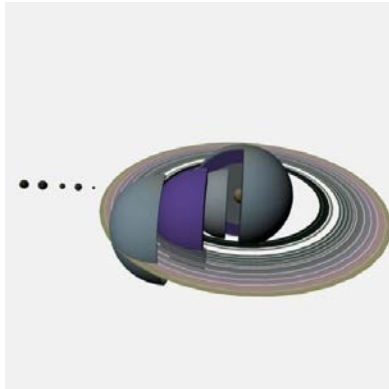
Hyperion
Solid: 1
Modeled



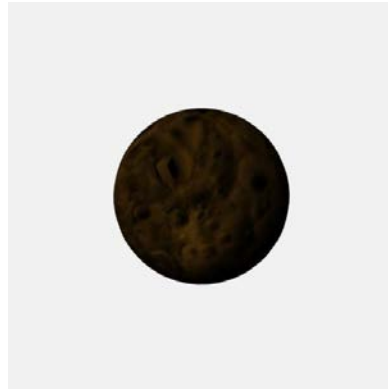
Iapetus
Solid: 1
Modeled



Phoebe
Solid: 1
Modeled



Uranus
Dissectible (Interior) : 28
Modeled



Miranda
Solid: 1
Modeled



Ariel
Solid: 1
Modeled



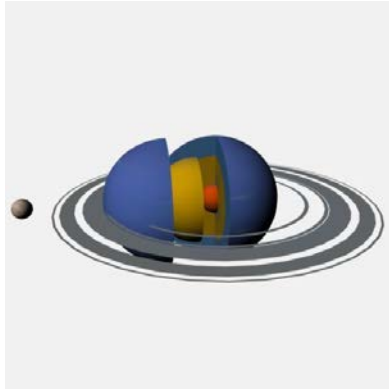
Umbriel
Solid: 1
Modeled



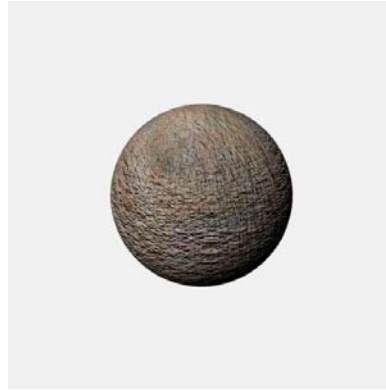
Titania
Solid: 1
Modeled



Oberon
Solid: 1
Modeled



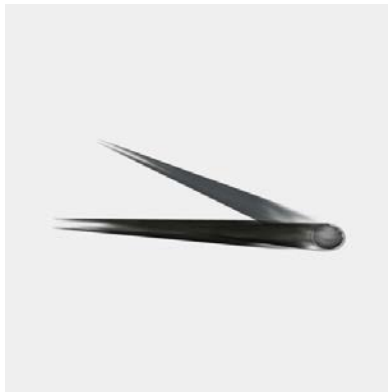
Neptune
Dissectible (Interior) : 13
Modeled



Triton
Solid: 1
Modeled

Comets and Asteroids

10 models



Encke Comet
Dissectible (Interior) : 5
Modeled



Halley's Comet
Dissectible (Interior) : 5
Modeled



Tempel Comet
Dissectible (Interior) : 4
Modeled



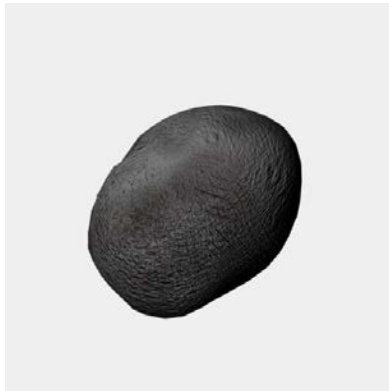
Tuttle Comet
Dissectible (Interior) : 5
Modeled



Ceres Asteroid
Solid: 1
Modeled



Europa Asteroid
Solid: 1
Modeled



Hygiea Asteroid
Solid: 1
Modeled



Interamnia Asteroid
Solid: 1
Modeled



Pallas Asteroid
Solid: 1
Modeled



Vesta Asteroid
Solid: 1
Modeled

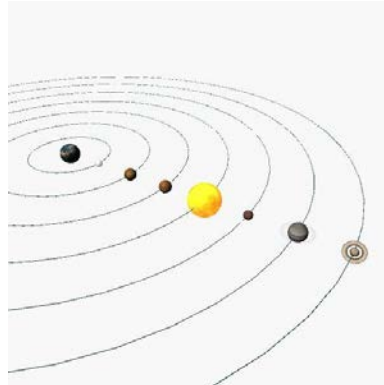
Solar System and Other

6 models



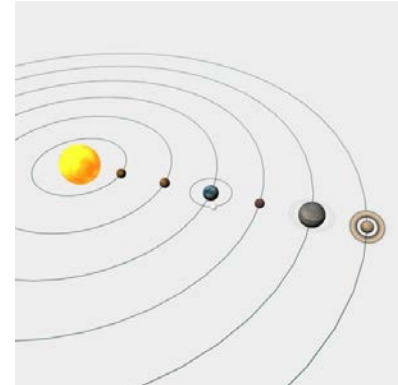
Solar System Orbits

Solid : 1
Modeled



Ptolemaic (Geocentric)

Dissectible (Interior) : 100
Modeled



Copernican (Heliocentric)

Dissectible (Interior) : 110
Modeled



Earth Atmosphere Layers

Dissectible (Interior) : 8
Modeled



Earth (Eclipse)

Dissectible (Interior) : 2
Modeled



Moon (Eclipse)

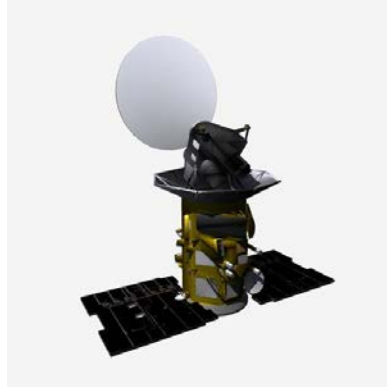
Solid : 1
Modeled

NASA Models

11 models



Apollo Lunar Module
Dissectible (Exterior) : 8
Modeled



Aquarius
Solid: 1
Modeled



Ares 1
Solid: 1
Modeled



Astronaut
Solid: 1
Modeled



Gemini
Solid: 1
Modeled



Hubble Space Telescope
Solid: 1
Modeled



International Space Station
Solid: 1
Modeled



Saturn V
Dissectible (Exterior) : 3
Modeled



Space Shuttle
Dissectible (Exterior) : 3
Modeled



Viking Lander
Dissectible (Exterior) : 5
Modeled



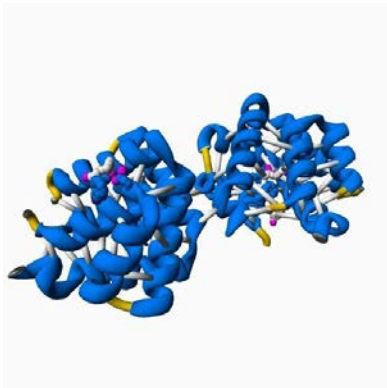
Voyager Probe
Solid: 1
Modeled

Biology

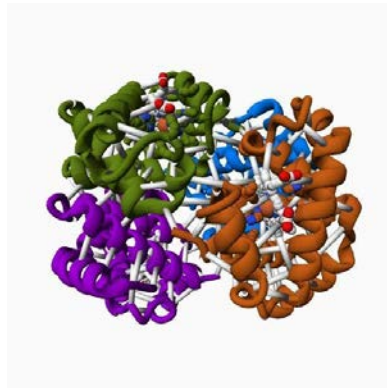
11 models

Proteins, Viruses, Macromolecules

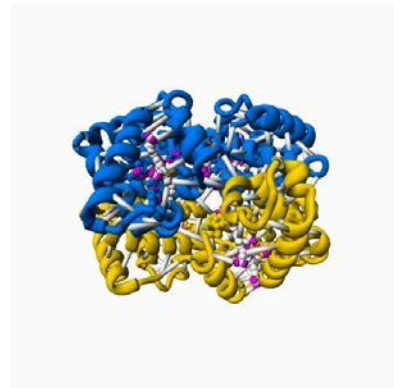
11 models



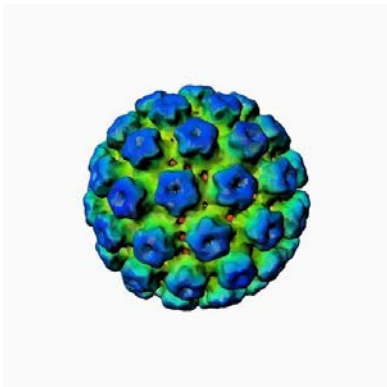
Cat Allergen Protein
Dissectible (Exterior) : 226
Modeled



Deoxygenated Hemoglobin
Solid: 1
Modeled



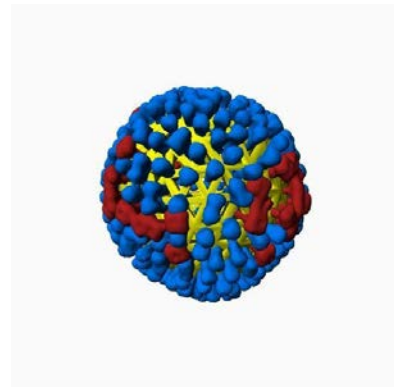
Hemoglobin
Dissectible (Exterior) : 69
Modeled



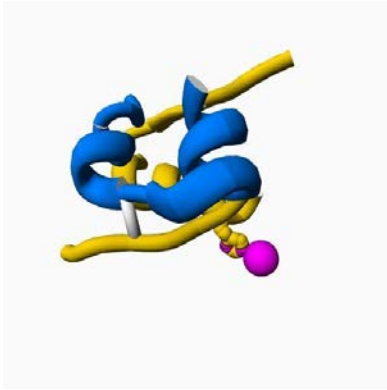
HPV
Solid: 1
Modeled



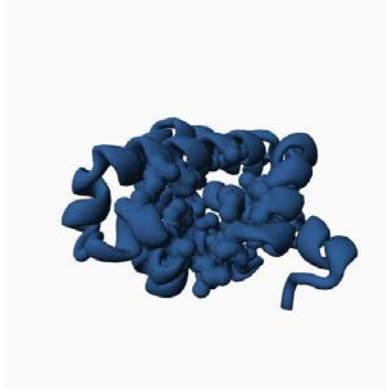
PHYH Protein
Solid: 1
Modeled



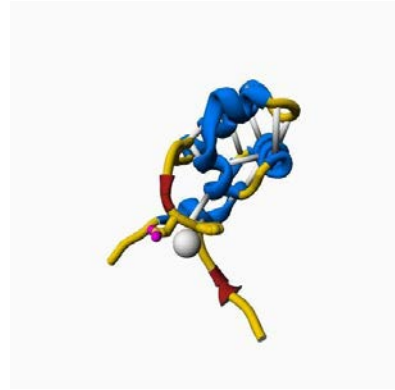
Influenza
Solid: 1
Modeled



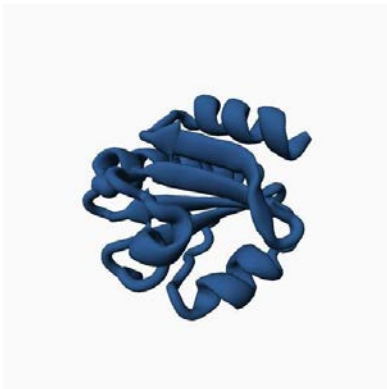
Insulin
Dissectible (Exterior) : 26
Modeled



Myoglobin
Solid: 1
Modeled



RNA Polymerase
Dissectible (Exterior) : 53
Modeled



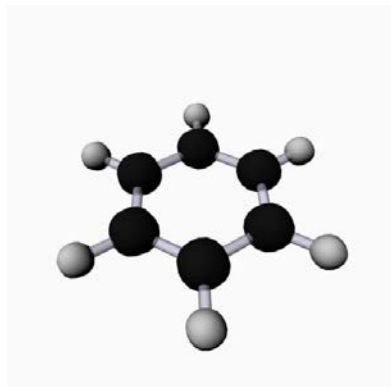
Thioredoxin
Solid: 1
Modeled



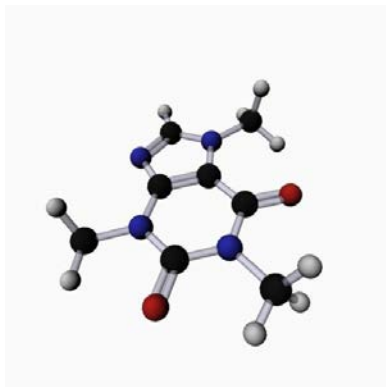
Ubiquitin
Solid: 1
Modeled

Chemistry

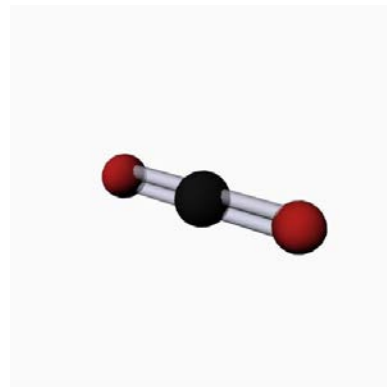
25 models



Benzene
Dissectible (Exterior) : 13
Modeled



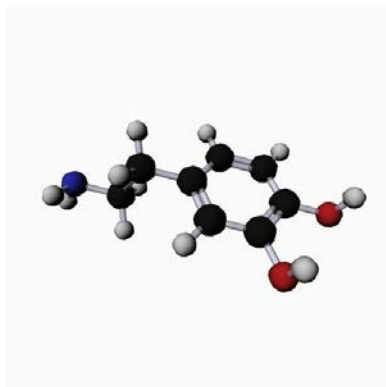
Caffeine
Dissectible (Exterior) : 24
Modeled



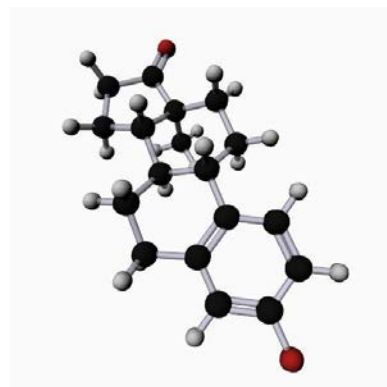
Carbon Dioxide
Dissectible (Exterior) : 4
Modeled



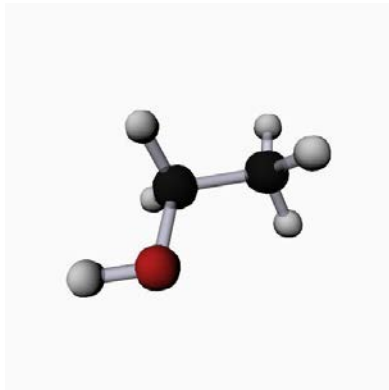
Diamond
Dissectible (Exterior) : 39
Modeled



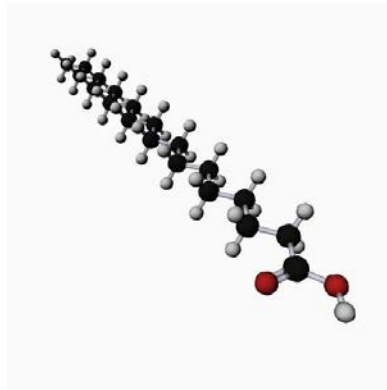
Dopamine
Dissectible (Exterior) : 23
Modeled



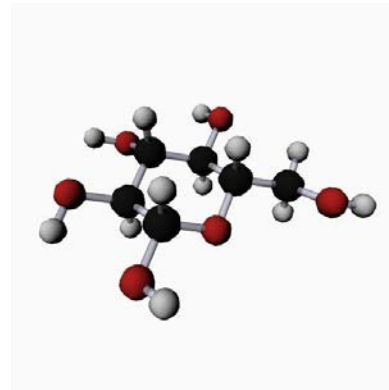
Estrogen
Dissectible (Exterior) : 43
Modeled



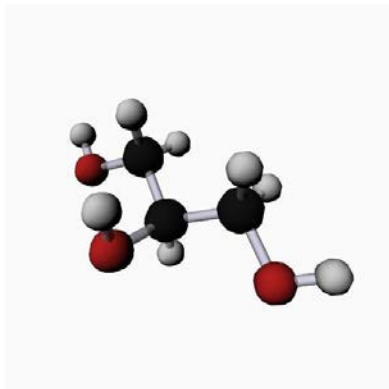
Ethanol
Dissectible (Exterior) : 9
Modeled



Fatty Acid Chain
Dissectible (Exterior) : 60
Modeled



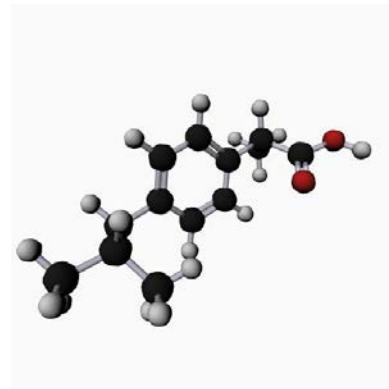
Glucose
Dissectible (Exterior) : 25
Modeled



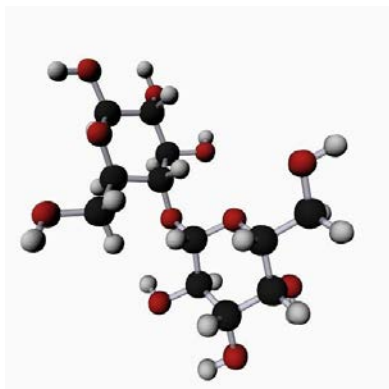
Glycerol
Dissectible (Exterior) : 15
Modeled



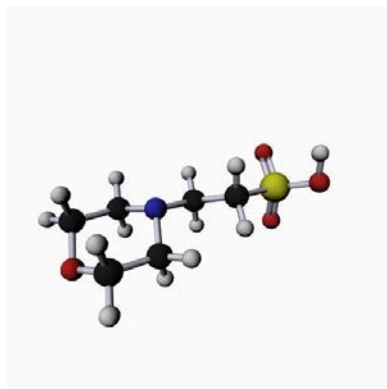
Graphite
Dissectible (Exterior) : 92
Modeled



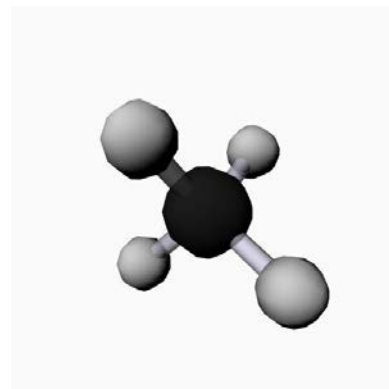
Ibuprofen
Dissectible (Exterior) : 34
Modeled



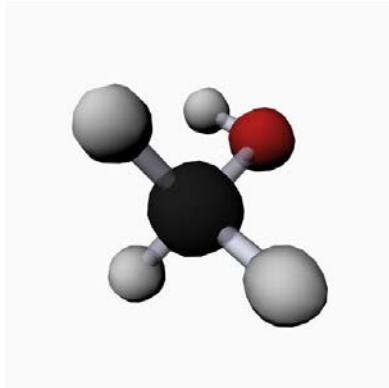
Lactose
Dissectible (Exterior) : 45
Modeled



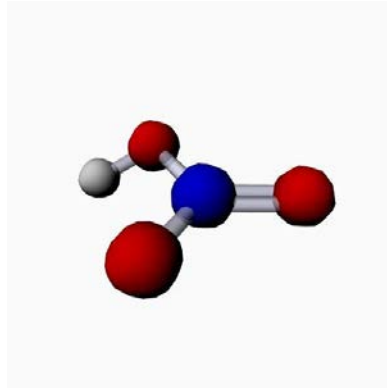
MES Buffer
Dissectible (Exterior) : 26
Modeled



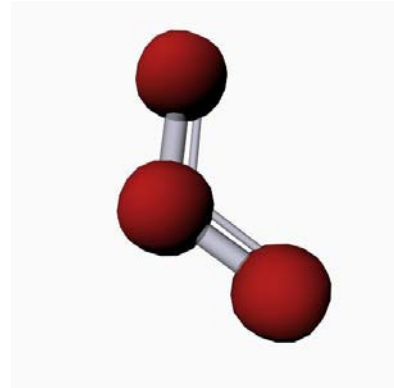
Methane
Dissectible (Exterior) : 6
Modeled



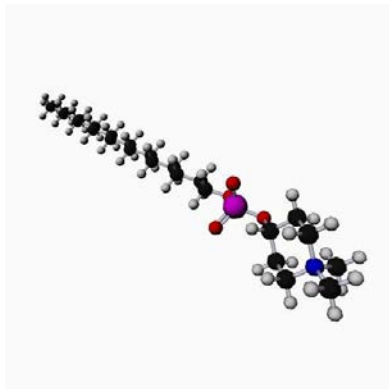
Methanol
Dissectible (Exterior) : 7
Modeled



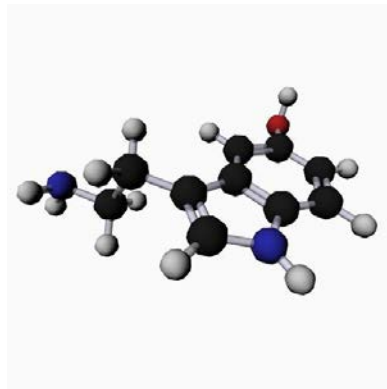
Nitric Acid
Dissectible (Exterior) : 6
Modeled



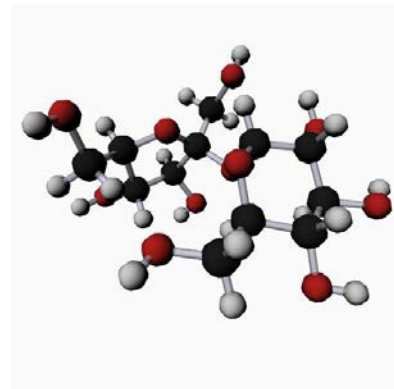
Ozone
Dissectible (Exterior) : 4
Modeled



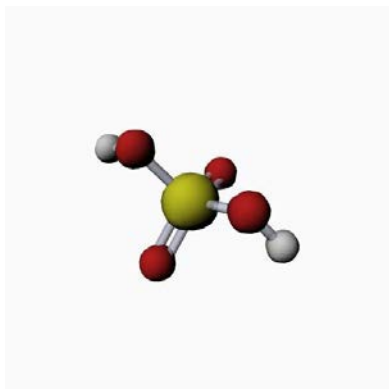
Phospholipid
Dissectible (Exterior) : 84
Modeled



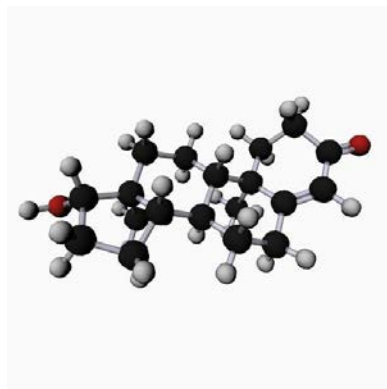
Serotonin
Dissectible (Exterior) : 26
Modeled



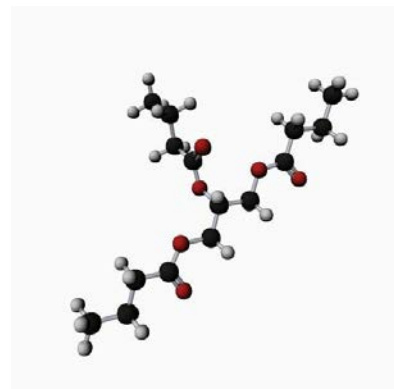
Sucrose
Dissectible (Exterior) : 47
Modeled



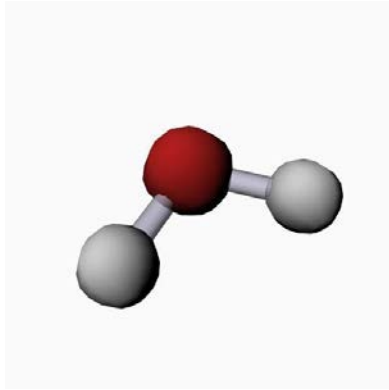
Sulfuric Acid
Dissectible (Exterior) : 8
Modeled



Testosterone
Dissectible (Exterior) : 50
Modeled



Triglyceride
Dissectible (Exterior) : 49
Modeled



Water

Dissectible (Exterior) : 4
Modeled

Furniture and Household Items

32 models



Bar Chair
Solid: 1
Modeled



Bar Table
Solid: 1
Modeled



Barrel
Solid: 1
Modeled



Bathroom Sink
Dissectible (Interior) : 22
Modeled



Bed
Solid: 1
Modeled



Bookshelf
Solid: 1
Modeled



Chandelier
Dissectible (Exterior) : 12
Modeled



Coffee Table
Dissectible (Exterior) : 3
Modeled



Crate
Solid: 1
Modeled



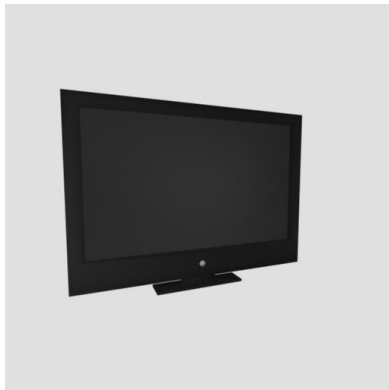
Crib
Solid: 1
Modeled



Desk (Small)
Dissectible (Exterior) : 2
Modeled



Double Bathroom Sink
Dissectible (Interior) : 30
Modeled



Flatscreen TV
Dissectible (Exterior) : 2
Modeled



Lamp
Dissectible (Exterior) : 2
Modeled



Large Table
Dissectible (Exterior) : 2
Modeled



Mirror
Dissectible (Exterior) : 2
Modeled



Office Chair
Solid: 1
Modeled



Office Desk
Dissectible (Exterior) : 5
Modeled



Radio
Dissectible (Exterior) : 4
Modeled



Shelves and Drawers Set
Dissectible (Exterior) : 4
Modeled



Side Table
Solid: 1
Modeled



Sofa #1
Dissectible (Exterior) : 7
Modeled



Sofa #2
Dissectible (Exterior) : 9
Modeled



Stool
Dissectible (Exterior) : 2
Modeled



Stove Oven
Dissectible (Exterior) : 5
Modeled



Swings
Solid: 1
Modeled



Table Fan
Solid: 1
Modeled



Tea Set
Dissectible (Exterior) : 9
Modeled



Toilet
Dissectible (Exterior) : 4
Modeled



Wall Mounted Shelf
Solid: 1
Modeled



Whiteboard
Solid: 1
Modeled



Wooden Chair
Solid: 1
Modeled

Historical Artifacts

7 models



Amelia Earhart's Flight Suit

Solid: 1
3D-Scan



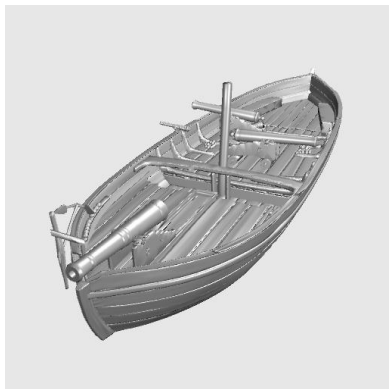
Burial Urn

Solid: 1
3D-Scan



Cosmic Buddha

Solid: 1
3D-Scan



Gunboat Philadelphia

Solid: 1
3D-Scan



Medieval Jug

Solid: 1
3D-Scan



Pergolesi Side Chair

Solid: 1
3D-Scan



Stanford Bunny

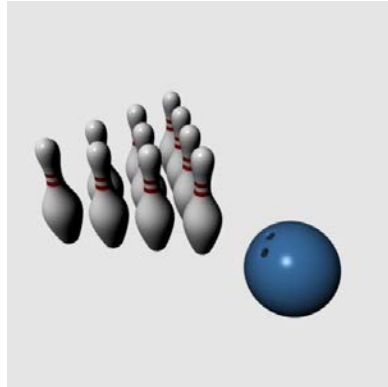
Solid: 1
3D-Scan

Just For Fun

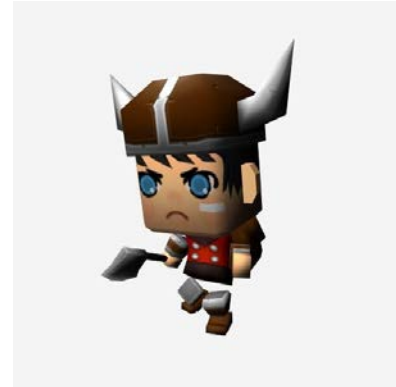
20 models



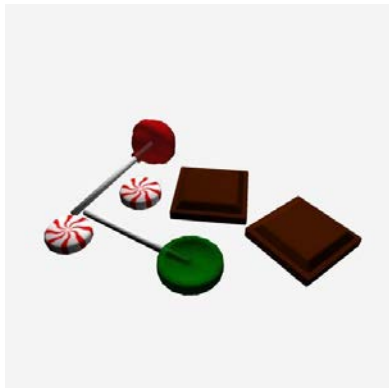
Alphabet
Dissectible (Exterior) : 26
Modeled



Bowling Ball and Pins
Dissectible (Exterior) : 11
Modeled



Box Knight
Dissectible (Exterior) : 3
Modeled



Candy
Dissectible (Exterior) : 8
Modeled



Cartoon Cow
Solid: 1
Modeled



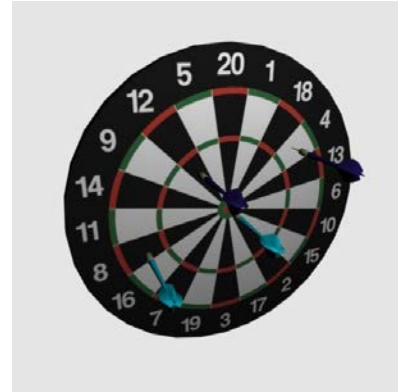
Cartoon Pig
Solid: 1
Modeled



Cheese Burger
Dissectible (Interior) : 12
Modeled



Chess Set
Dissectible (Exterior) : 39
Modeled



Dart Board
Dissectible (Exterior) : 5
Modeled



Flying Ship
Dissectible (Exterior) : 5
Modeled



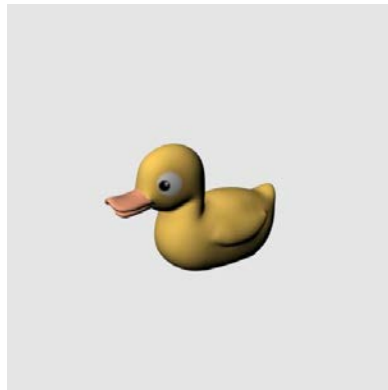
Golem
Solid: 1
Modeled



Hot Air Balloon
Dissectible (Exterior) : 3
Modeled



Radioactive Waste
Solid: 1
Modeled



Rubber Duck
Solid: 1
Modeled



Spaceship
Solid: 1
Modeled



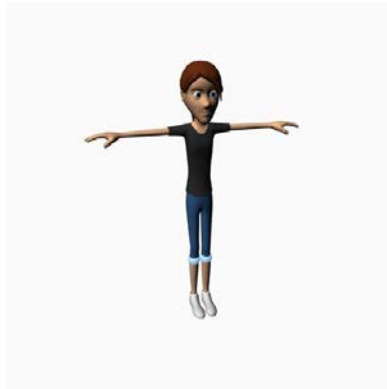
Spiderbot
Solid: 1
Modeled



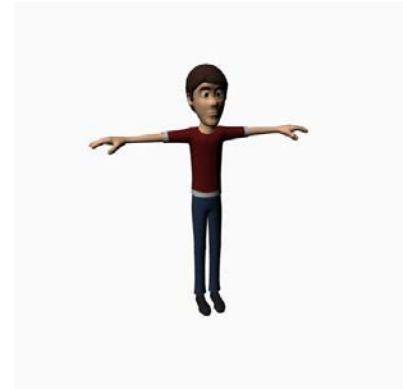
Treasure Chest
Solid: 1
Modeled



Cartoon Man
Solid: 1
Modeled



Cartoon Teenage Girl
Solid: 1
Modeled



Cartoon Teenage Boy
Solid: 1
Modeled

Landmarks

29 models



Arc de Triomphe
Solid: 1
Modeled



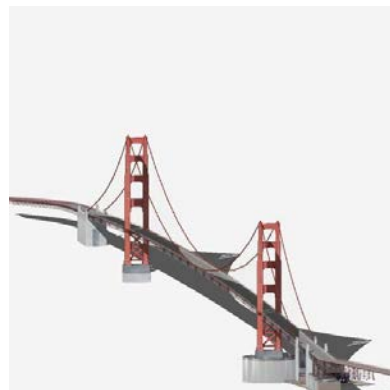
Burj Khalifa
Solid: 1
Modeled



Easter Island Moai Statue
Dissectible (Exterior) : 3
Modeled



Eiffel Tower
Solid: 1
Modeled



Golden Gate Bridge
Solid: 1
Modeled



Independence Hall
Solid: 1
Modeled



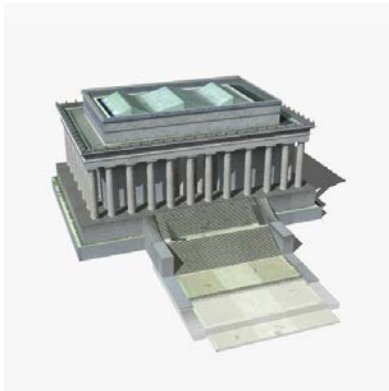
Kasuga Taisha Shrine
Dissectible (Exterior) : 14
Modeled



Leaning Tower of Pisa
Solid: 1
Modeled



Leptis Magna Market
Solid: 1
Modeled



Lincoln Memorial
Solid: 1
Modeled



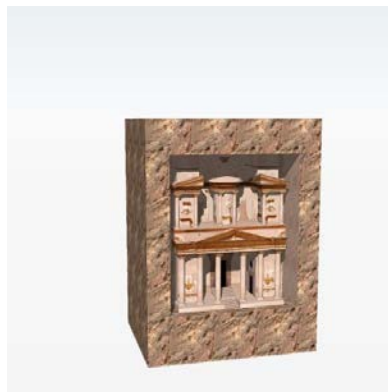
Mission Dolores
Solid: 1
Modeled



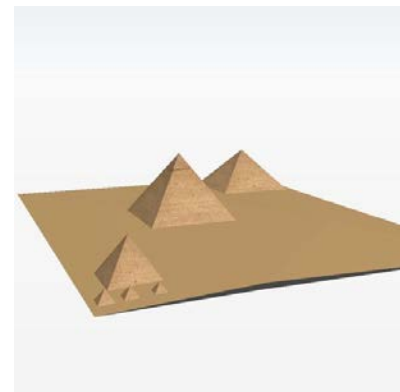
M.L.K. Memorial
Dissectible (Exterior) : 2
Modeled



Parthenon
Solid: 1
Modeled



Petra Treasury
Solid: 1
Modeled



Pyramids of Giza
Solid: 1
Modeled



Roman Colosseum
Solid: 1
Modeled



Sabratha Theatre
Solid: 1
Modeled



Smithsonian Museum of
American Art
Solid: 1
Modeled



Solomon's Temple
Dissectible (Exterior) : 3
Modeled



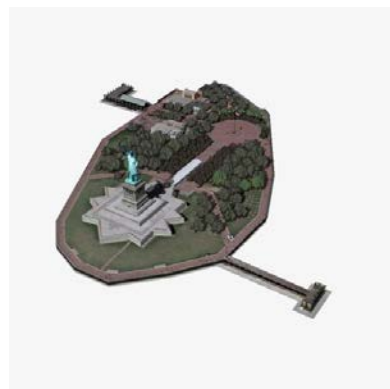
Space Needle
Solid: 1
Modeled



Sphinx
Solid: 1
Modeled



St. Patrick's Cathedral
Solid: 1
Modeled



Statue of Liberty
Dissectible (Exterior) : 2
Modeled



Stonehenge
Solid: 1
Modeled



Sydney Opera House
Solid: 1
Modeled



Taj Mahal
Solid: 1
Modeled



Temple Of Kukulkan
Solid: 1
Modeled



Washington Monument
Solid: 1
Modeled



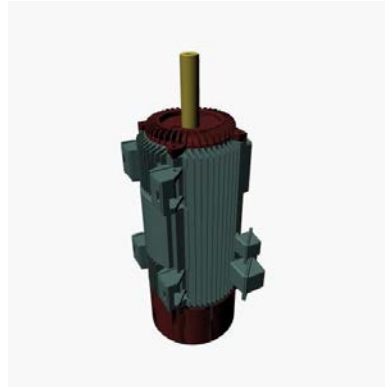
Willis Tower
Solid: 1
Modeled

Mechanical

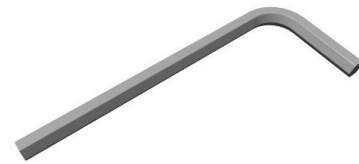
69 models



16 Battery Holder
Dissectible (Exterior) : 37
Modeled



AC Induction Motor
Dissectible (Interior) : 16
Modeled



Allen Wrench
Solid: 1
Modeled



Arcade Stick
Dissectible (Exterior) : 11
Modeled



Arduino Uno
Dissectible (Exterior) : 49
Modeled



Ball Bearing
Dissectible (Interior) : 6
Modeled



Bike Pedals & Crank
Dissectible (Exterior) : 21
Modeled



Caliper
Dissectible (Exterior) : 3
Modeled



Caster
Dissectible (Exterior) : 3
Modeled



Centrifugal Pump
Dissectible (Interior) : 18
Modeled



Clamp
Dissectible (Exterior) : 2
Modeled



Cordless Drill
Dissectible (Exterior) : 2
Modeled



Crane Hook
Dissectible (Exterior) : 7
Modeled



DC Motor 3V
Dissectible (Interior) : 11
Modeled



DC Motor 12V
Dissectible (Interior) : 11
Modeled



Diesel Generator
Dissectible (Exterior) : 4
Modeled



Disc Brake
Dissectible (Exterior) : 12
Modeled



Double Cardan Joint
Dissectible (Exterior) : 19
Modeled



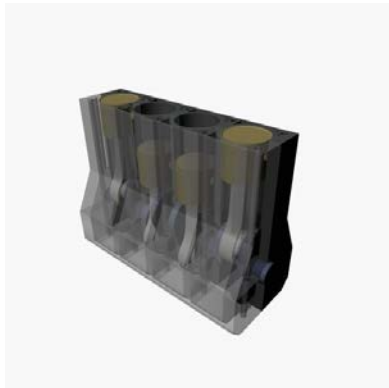
Electromagnetic Actuator
Dissectible (Interior) : 27
Modeled



Exhaust Fan
Dissectible (Exterior) : 3
Modeled



Flashlight
Dissectible (Interior) : 19
Modeled



Four Stroke Engine
Dissectible (Interior) : 13
Modeled



Horizontal Beam Engine
Dissectible (Interior) : 57
Modeled



Horizontal Stirling Engine
Dissectible (Interior) : 31
Modeled



Hydraulic Cylinder
Dissectible (Interior) : 14
Modeled



Jet Engine (Trent 1000)
Dissectible (Interior) : 13
Modeled



LED (Blue)
Dissectible (Interior) : 3
Modeled



LED (Green)
Dissectible (Interior) : 3
Modeled



LED (Orange)
Dissectible (Interior) : 3
Modeled



LED (Pink)
Dissectible (Interior) : 3
Modeled



LED (Purple)
Dissectible (Interior) : 3
Modeled



LED (Red)
Dissectible (Interior) : 3
Modeled



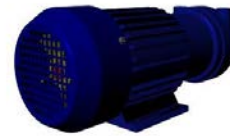
LED (White)
Dissectible (Interior) : 3
Modeled



LED (Yellow)
Dissectible (Interior) : 3
Modeled



Lightbulb
Dissectible (Interior) : 3
Modeled



Liquid Ring Vacuum Pump
Dissectible (Interior) : 10
Modeled



Locking Pliers
Dissectible (Exterior) : 14
Modeled



Mechanical Wall Clock
Dissectible (Interior) : 25
Modeled



Micro USB
Dissectible (Interior) : 4
Modeled



Mini Hydraulic Press
Dissectible (Interior) : 10
Modeled



Miter Saw
Dissectible (Interior) : 18
Modeled



Mouse Trap
Dissectible (Exterior) : 7
Modeled



Pipe Wrench
Dissectible (Exterior) : 7
Modeled



Piston
Dissectible (Interior) : 5
Modeled



Pocket Watch
Dissectible (Interior) : 83
Modeled



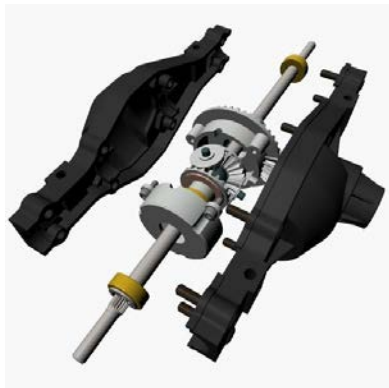
Power Strip
Dissectible (Exterior) : 10
Modeled



PS3 Controller
Dissectible (Exterior) : 17
Modeled



Radial Engine
Dissectible (Interior) : 42
Modeled



Rear Differential
Dissectible (Interior) : 49
Modeled



Rotary Engine
Dissectible (Interior) : 10
Modeled



Rzeppa Joint
Dissectible (Interior) : 5
Modeled



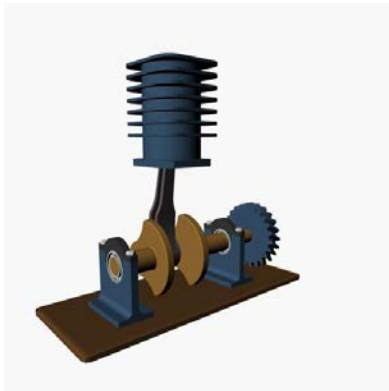
Scissor Car Jack
Dissectible (Exterior) : 14
Modeled



Screwdriver -Flat
Dissectible (Exterior) : 2
Modeled



Screwdriver - Philips
Dissectible (Exterior) : 2
Modeled



Single Cylinder Engine
Dissectible (Interior) : 17
Modeled



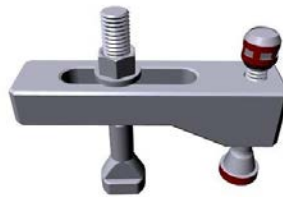
Swiss Army Knife
Dissectible (Exterior) : 17
Modeled



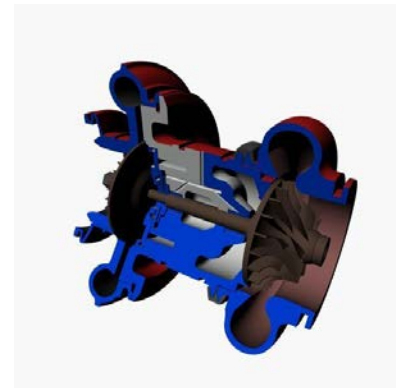
Torque Converter
Dissectible (Interior) : 14
Modeled



Tripod Joint
Dissectible (Interior) : 14
Modeled



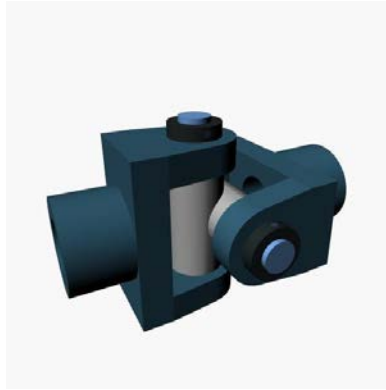
T-Slot Clamp
Dissectible (Exterior) : 5
Modeled



Turbocharger
Dissectible (Interior) : 15
Modeled



Two Stroke Engine
Dissectible (Interior) : 20
Modeled



Universal Coupling
Dissectible (Interior) : 9
Modeled



V8 Engine
Dissectible (Interior) : 18
Modeled



V8 Engine w/ Casing
Solid: 1
Modeled



Wall Outlet
Dissectible (Interior) : 5
Modeled



Water Nozzle
Dissectible (Interior) : 19
Modeled



Wind Turbine
Dissectible (Interior) : 38
Modeled



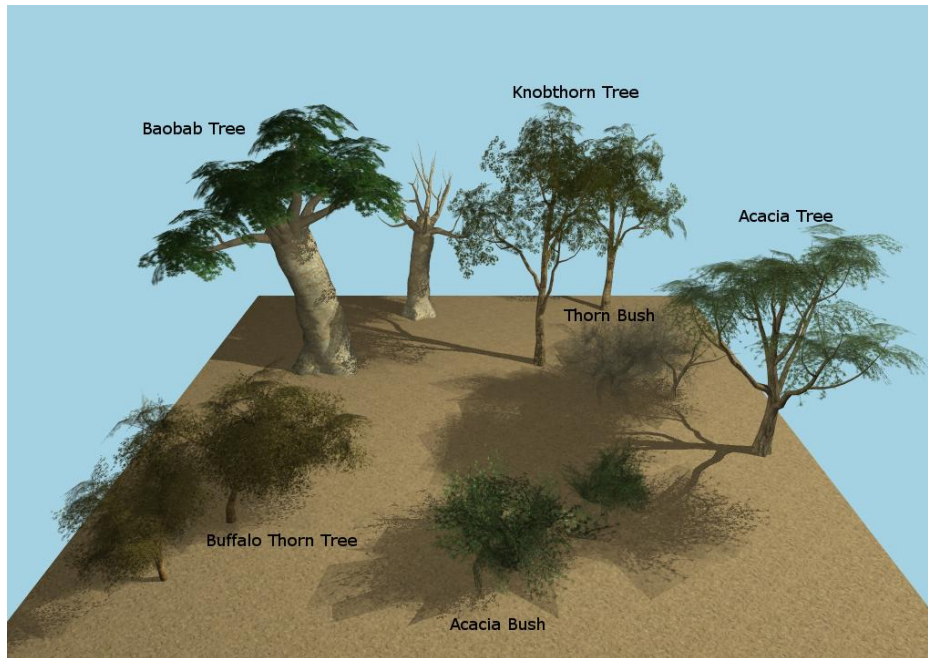
Worm Gear
Dissectible (Interior) : 38
Modeled



Xbox 360 Controller
Dissectible (Exterior) : 19
Modeled

Plants and Trees

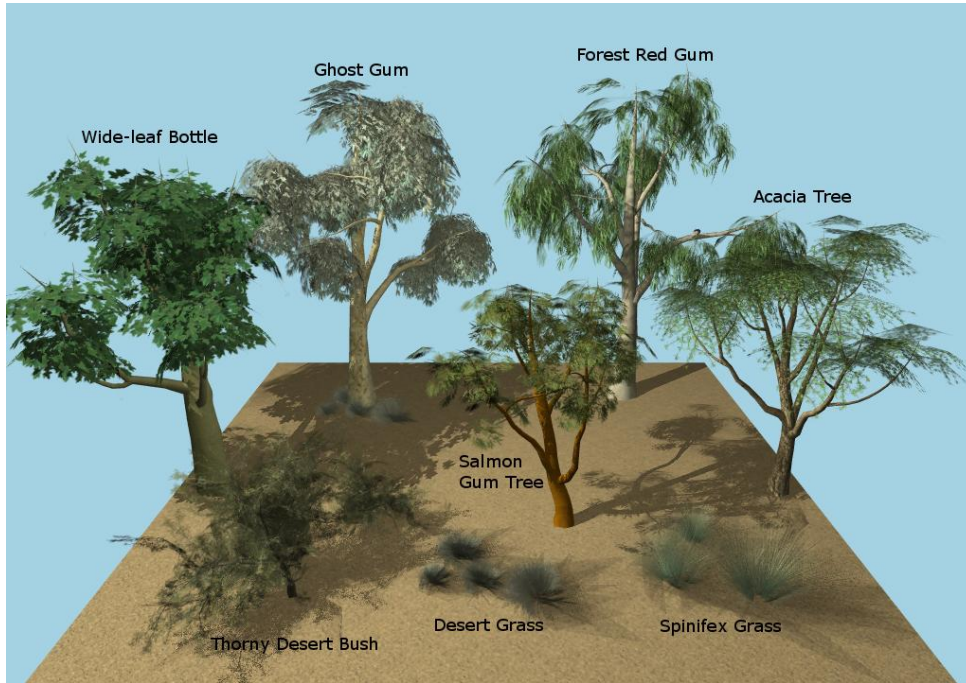
75 models



African Savannah Plants - 6 unique species

Dissectible (Exterior) : 1-2

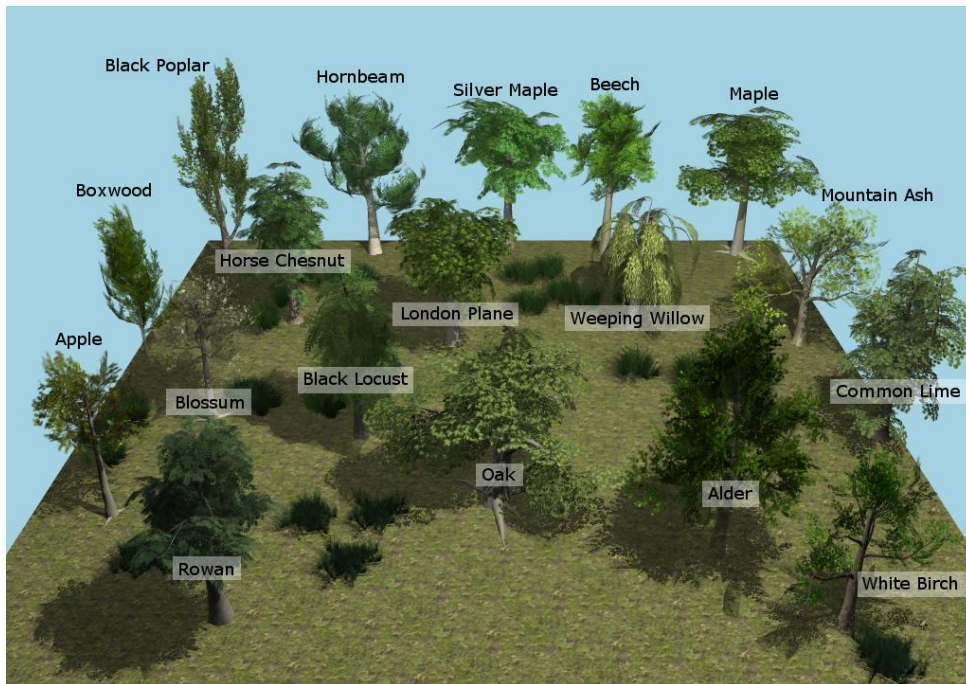
Modeled



Australian Outback Plants - 7 unique species

Dissectible (Exterior) : 1-2

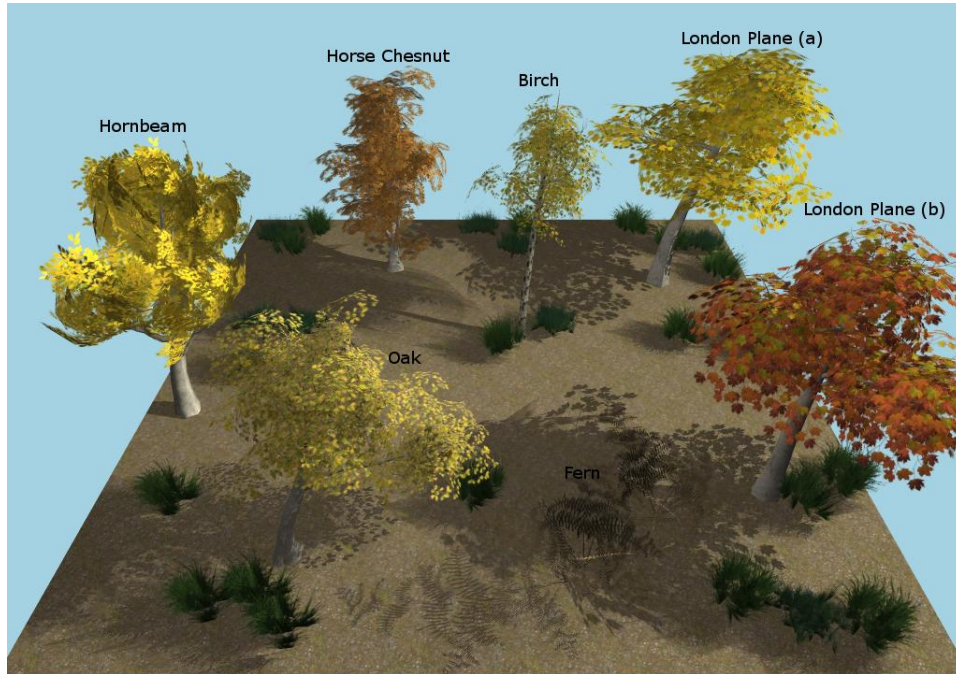
Modeled



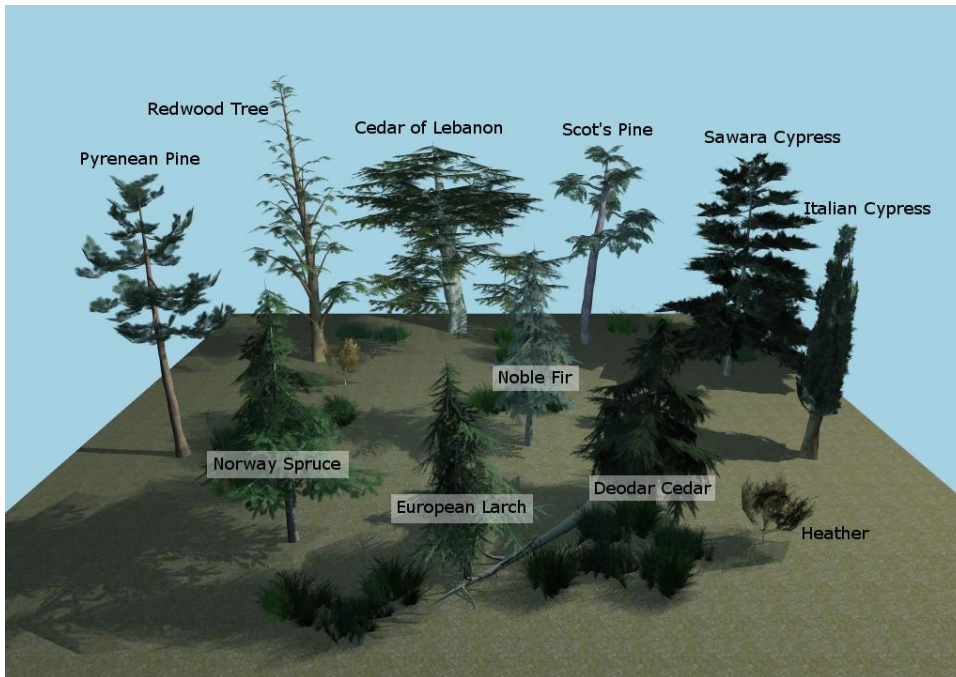
Deciduous Plants - 18 unique species

Dissectible (Exterior) : 1-2

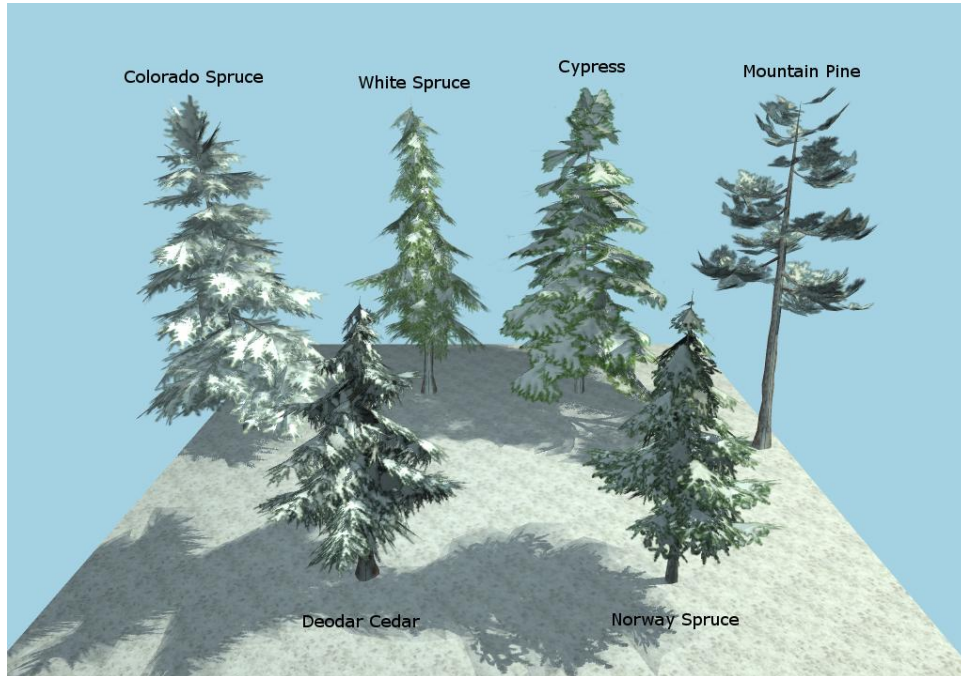
Modeled



Deciduous Plants (Autumn) - 7 unique species
 Dissectible (Exterior) : 1-2
 Modeled



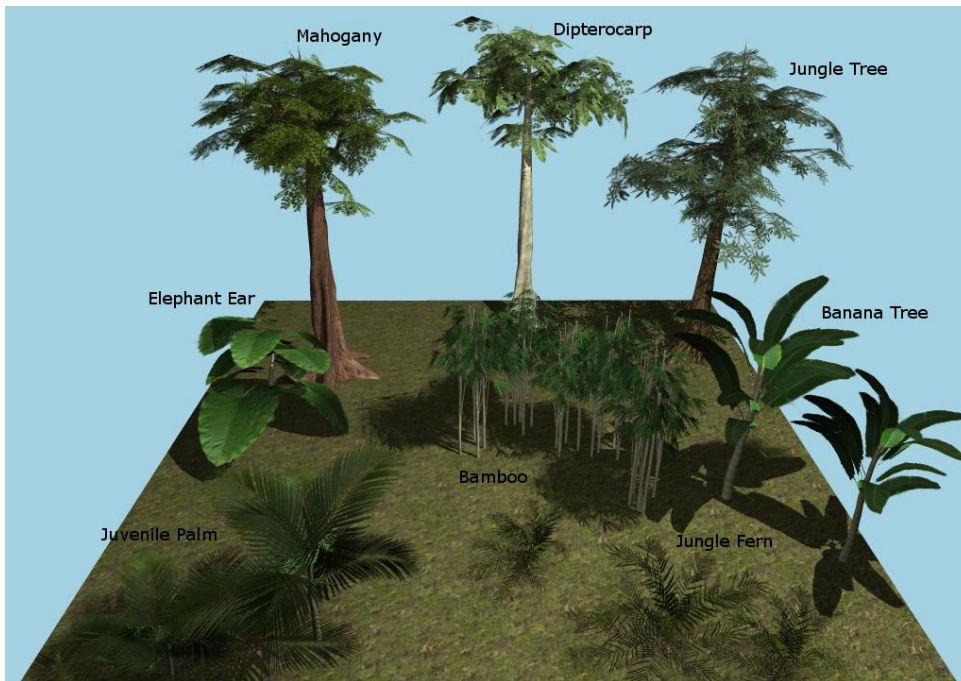
Coniferous Forest Plants - 11 unique species
 Dissectible (Exterior) : 1-2
 Modeled



Coniferous Trees (Snow) - 6 unique species

Dissectible (Exterior) : 1-2

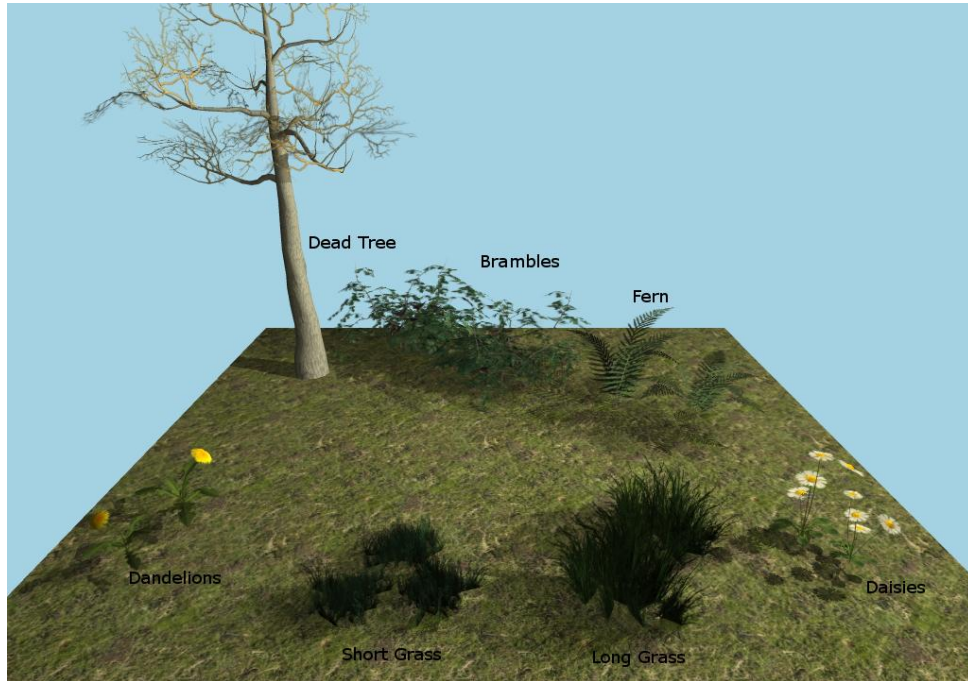
Modeled



Jungle Plants - 8 unique species

Dissectible (Exterior) : 1-2

Modeled



Other Misc. Plants - 7 unique species

Dissectible (Exterior) : 1-2

Modeled



Embreea Orchid

Solid: 1

3D-Scan



Tree Trunk

Dissectible (Interior) : 9

Modeled



Complete Flower
Dissectible (Interior) : 27
Modeled



Male Flower
Dissectible (Exterior) : 32
Modeled



Female Flower
Dissectible (Interior) : 14
Modeled

Statuary and Sculpture

22 models



Alexander the Great

Solid: 1
3D-Scan



Albert Einstein

Solid: 1
3D-Scan



Beethoven Bust

Solid: 1
3D-Scan



Female Torso, Esquiline Type

Solid: 1
3D-Scan



Figure for Landscape

Solid: 1
3D-Scan



Georges Méliès

Solid: 1
3D-Scan



Horse of Selene

Solid: 1
3D-Scan



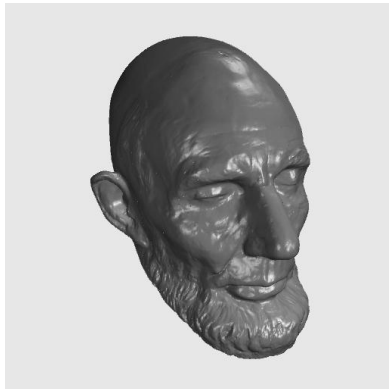
The Inopos

Solid: 1
3D-Scan



Judas

Solid: 1
3D-Scan



Lincoln Life Mask

Solid: 1
3D-Scan



The Lion of Knidos

Solid: 1
3D-Scan



Male Torso, Diadumenus

Solid: 1
3D-Scan



Marble Player

Solid: 1
3D-Scan



Bust of Mary Seacole

Solid: 1
3D-Scan



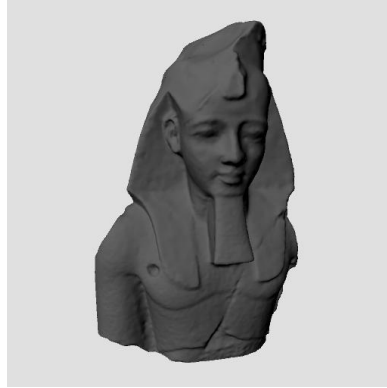
Perikles

Solid: 1
3D-Scan



The Queen of the Night

Solid: 1
3D-Scan



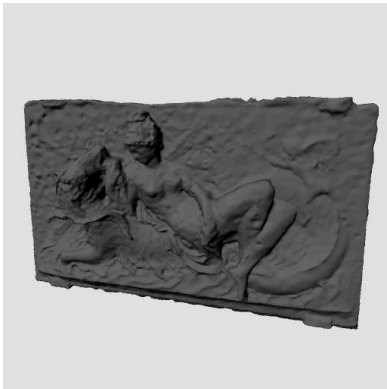
Colossal Bust of Ramesses II

Solid: 1
3D-Scan



Sappho

Solid: 1
3D-Scan



Venus Reclining on a Sea
Monster with Cupid and a Putto

Solid: 1
3D-Scan



Venus de Milo

Solid: 1
3D-Scan



The Walking Man

Solid: 1
3D-Scan



Winged Victory

Solid: 1
3D-Scan

Vehicles

60 models

Helicopters

20 models



AH64 Apache
Dissectible (Exterior) : 11
Modeled



American Eurocopter Armed Scout 645
Dissectible (Interior) : 17
Modeled



Arch M73 Helicopter
Dissectible (Exterior) : 8
Modeled



AV 22 LSOC Ghost
Dissectible (Interior) : 30
Modeled



Bell UH1Y Venom
Dissectible (Interior) : 16
Modeled



CH 53GS
Dissectible (Interior) : 14
Modeled



Eurocopter EC135
Dissectible (Interior) : 17
Modeled



Eurocopter EC145
Dissectible (Interior) : 18
Modeled



Eurocopter EC 130
Dissectible (Interior) : 6
Modeled



Eurocopter EC725
Dissectible (Interior) : 22
Modeled



Kamov Ka52
Dissectible (Interior) : 23
Modeled



MBB BK117
Dissectible (Interior) : 23
Modeled



MD 900 Medical
Dissectible (Interior) : 20
Modeled



Md 900 Explorer
Dissectible (Interior) : 24
Modeled



MD 902 Explorer
Dissectible (Interior) : 19
Modeled



MH 60 Stealth Black Hawk
Dissectible (Interior) : 32
Modeled



Police Eurocopter AS-350
Dissectible (Interior) : 15
Modeled



RAH- 66 Comanche
Dissectible (Interior) : 26
Modeled



Mil Mi24
Dissectible (Interior) : 19
Modeled



UH60 Black Hawk
Dissectible (Interior) : 21
Modeled

Planes & Jets

13 models



Airbus A320
Dissectible (Exterior) : 5
Modeled



Airbus A350
Dissectible (Exterior) : 50
Modeled



Boeing 747
Dissectible (Exterior) : 50
Modeled



Boeing 787
Dissectible (Exterior) : 6
Modeled



Boeing C17
Dissectible (Interior) : 14
Modeled



Douglas C47
Dissectible (Exterior) : 6
Modeled



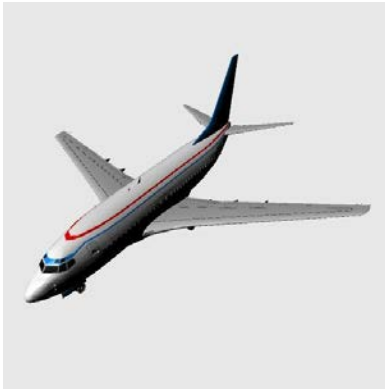
F106 Delta Dart
Dissectible (Interior) :17
Modeled



F 18 Hornet
Dissectible (Interior) : 19
Modeled



F 22 Raptor
Dissectible (Interior) : 4
Modeled



N73050 Aircraft
Dissectible (Exterior) : 4
Modeled



RA 77912 Carrier
Dissectible (Interior) : 16
Modeled



Sukhoi Su 34
Dissectible (Interior) : 21
Modeled



VC25 Air Force 1
Dissectible (Exterior) : 7
Modeled

Cars

19 models



Alfa 147
Dissectible (Interior) : 27
Modeled



Audi A6
Dissectible (Interior) : 26
Modeled



Audi A8
Dissectible (Interior) : 53
Modeled



Audi R8
Dissectible (Interior) : 16
Modeled



Audi Q7
Dissectible (Interior) : 27
Modeled



Bentley Continental
Dissectible (Interior) : 52
Modeled



BMW 3 series
Dissectible (Interior) : 33
Modeled



BMW X3
Dissectible (Interior) : 25
Modeled



BMW 6 series
Dissectible (Interior) : 48
Modeled



BMW 645ci Series
Dissectible (Interior) : 26
Modeled



74 Dodge Charger
Dissectible (Interior) : 26
Modeled



Ferrari 458
Dissectible (Interior) : 39
Modeled



Lamborghini Gallardo
Dissectible (Interior) : 42
Modeled



Mercedes ML500
Dissectible (Interior) : 41
Modeled



Mercedes SLS
Dissectible (Interior) : 38
Modeled



Mini Cooper
Dissectible (Interior) : 43
Modeled



Porsche Panamera
Dissectible (Interior) : 47
Modeled



Range Rover
Dissectible (Interior) : 37
Modeled



**Volkswagen Karmann Ghia
Coupe**
Dissectible (Interior) : 40
Modeled

Motorcycles

2 models



BMW S1000

Dissectible (Interior) : 16
Modeled



V-rod 2B

Dissectible (Interior) : 16
Modeled

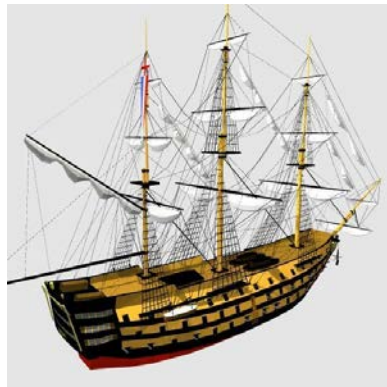
Nautical Vehicles

6 models



USS Constitution

Dissectible (Exterior) : 6
Modeled



HMS Victory

Dissectible (Exterior) : 9
Modeled



Santa Maria

Dissectible (Exterior) : 6
Modeled



Bismarck Battleship
Dissectible (Exterior) : 7
Modeled



USS Blueback
Dissectible (Exterior) : 2
Modeled



Queen Anne's Revenge
Dissectible (Exterior) : 2
Modeled

Zoology

40 models

Animals

33 models



Bear
Solid: 1
Modeled



Boar
Solid: 1
Modeled



Chicken (Brown)
Solid: 1
Modeled



Chicken (Grey)
Solid: 1
Modeled



Chicken (Tan)
Solid: 1
Modeled



Cow
Solid: 1
Modeled



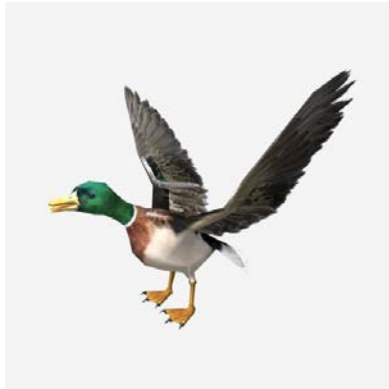
Crab
Dissectible (Exterior) : 11
3D-Scan



Crocodile
Solid: 1
Modeled



Crow
Solid: 1
Modeled



Duck
Solid: 1
Modeled



Elephant
Solid: 1
Modeled



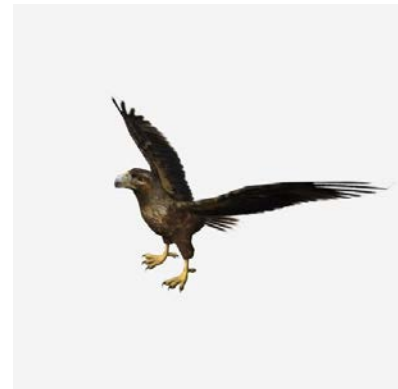
Elephant w/ Skeleton
Dissectible (Interior) : 50
Modeled



Fox
Solid: 1
Modeled



Goat
Solid: 1
Modeled



Golden Eagle
Solid: 1
Modeled



Great Horned Owl
Solid: 1
Modeled



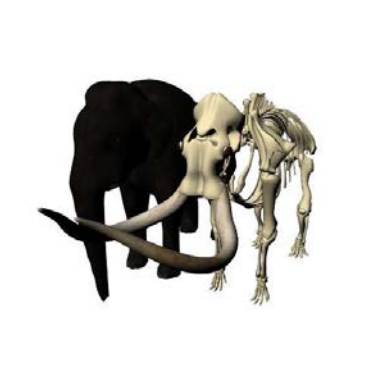
Hippopotamus
Solid: 1
Modeled



Lion
Solid: 1
Modeled



Lioness
Solid: 1
Modeled



Mammoth w/ Skeleton
Dissectible (Interior) : 52
Modeled



Pig
Solid: 1
Modeled



Pigeon
Solid: 1
Modeled



Rabbit
Solid: 1
Modeled



Rhinoceros
Solid: 1
Modeled



Seagull
Solid: 1
Modeled



Sheep
Solid: 1
Modeled



Sparrow
Solid: 1
Modeled



Stag
Solid: 1
Modeled



Tiger
Solid: 1
Modeled



Wolf (Arctic)
Solid: 1
Modeled



Wolf (Black)
Solid: 1
Modeled



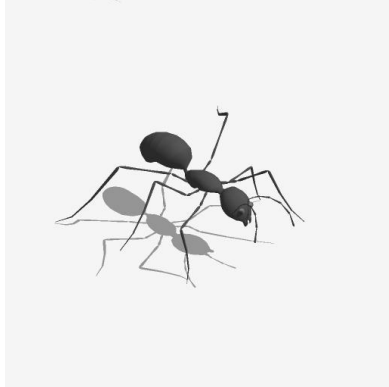
Wolf (Brown)
Solid: 1
Modeled



Zebra
Solid: 1
Modeled

Bugs and Insects

7 models



Ant

Dissectible (Exterior) : 11
Modeled



Black Widow Spider

Dissectible (Exterior) : 12
Modeled



Butterfly

Dissectible (Exterior) : 11
Modeled



Dragonfly

Dissectible (Exterior) : 5
Modeled



Eulaema Bee

Solid: 1
3D-Scan



Praying Mantis

Dissectible (Exterior) : 10
Modeled



Wasp

Dissectible (Exterior) : 15

Modeled

Appendix

Fossil Scans Sources

Fossil #	Link to Specimen Info	Period
1	LIVCM 18.4.86.288	Carboniferous Period
2	BMB BMB 007750	Cretaceous Period
3	BMB BMB 007867	Cretaceous Period
4	BMB BMB 007896	Cretaceous Period
5	SM B 277 –	Cretaceous Period
6	BMB BMB 007201	Cretaceous Period
7	BRSUG 27200	Triassic Period
8	LIVCM 8.7.70.AC	n/a
9	BMB BMB 007246	Cretaceous Period
10	BRSUG 7976	Triassic Period
11	YORYM YORYM : YM 57	Quaternary Period
12	SM C 11027	Palaeogene Period
13	YORYM YORYM : YM 813	Neogene Period
14	SM C 20910	Palaeogene Period
15	YORYM YORYM : YM 519	Tertiary Sub-era
16	BGS GSM11884	n/a
17	BGS GSM102143	n/a
18	NEWHM NEWHM : G15.69	Carboniferous Period
19	NMS NMS G.1902.100.1	Carboniferous Period
20	NEWHM NEWHM : G15.72	Carboniferous Period
21	MIWG MIWG.6348	Cretaceous Period
22	LYMPH LYMPH : 1997.37.6	Jurassic Period
23	RAMM 60/1985/292	n/a
24	DORCM G.00023	Jurassic Period
25	BGS GSM98605	n/a
26	SM C 19132	Palaeogene Period