

Medical Learning Solutions

Introducing an immersive learning platform for medical training

Inspire

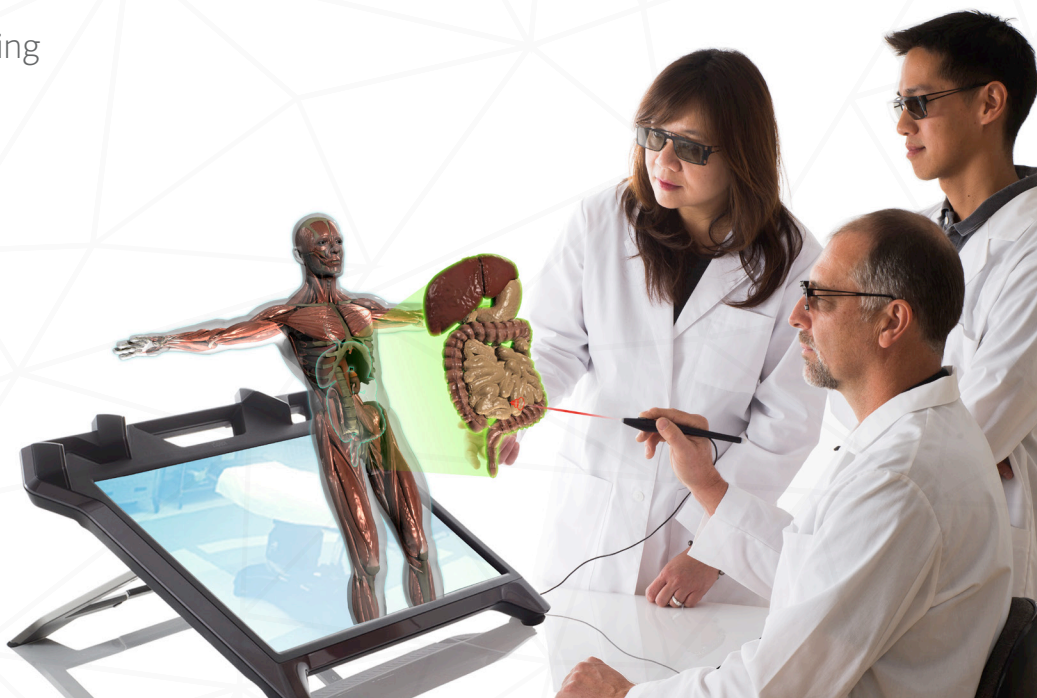
Understanding of complex science concepts

Empower

Mastery-based learning using virtual living body structures with accurate anatomical representation

Collaborate

For procedural planning, team learning and presentation of findings



Teaching with zSpace

Gross Anatomy VR Lab

Promote kinesthetic learning of human anatomy by coupling zSpace with the Cyber Anatomy Med VR package. Students can fully explore over 13,000 anatomical objects by systems and regions using accurate Anatomica Terminologica. This is the perfect solution to augment or replace an existing cadaver lab.

zSpace Anatomy Lab Manual

Comprehensive lab workbook to augment a Gross Anatomy course for undergraduate and AP Biology studies. Written and curated by medical education professionals, this tool is a self-guided manual with examples, activities, and assessment. A teacher's guide is available as well. The lab manual dovetails with the zSpace Gross Anatomy VR Lab.

Teaching Presentation View

Using our zView technology, the educator can share the teaching experience with the class via a standard projector, white board, or HD TV.



zSpace experience captured with zView

Surgical Training

Practice surgical procedures in zSpace with step-by-step training and progress tracking. Students can choose from varying levels of difficulty.

DICOM Viewer

This powerful DICOM image viewer will volumetrically render 2D DICOM slices, producing rich representations in zSpace. Designed to reduce cognitive load on data analysis, zSpace provides you with the spatial realism to quickly identify features of interest.

“It was the most awesome educational tool that I had seen in a long time.”

- Kathy Webster

Founding Dean
Keck Graduate Institute School of Pharmacy

Our Software Partners



Cyber-Anatomy®

nGRAIN®
SEE BEYOND REALITY



TOUCHSURGERY

echopixel

What's in the Package

- zSpace display: 24 inch HD LCD (1080p/120Hz) with built-in tracking sensors
- Stylus with 3-buttons and integrated infrared LED
- Polarized passive eyewear
- Passive, non-tracked 2D conversion eyewear
- Shuttle 51 PC w/ keyboard and mouse

Learn more at zspace.com

